

# MOTOTRBO Radio Communications

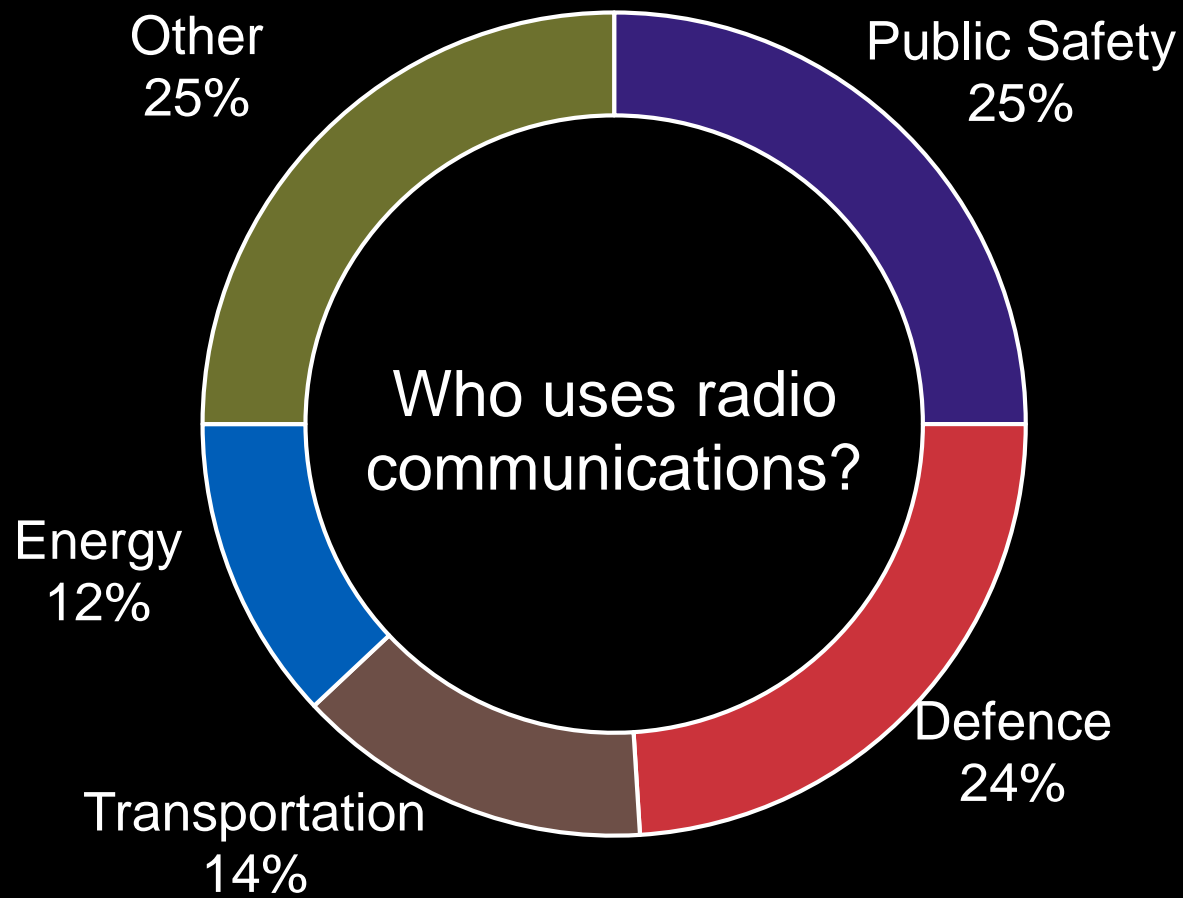
Marijo Kolovrat - Channel Account Manager Enterprise, Balkans

June 2024

[marijo.kolovrat@motorolasolutions.com](mailto:marijo.kolovrat@motorolasolutions.com)









- ✓ Instant clear communications.
- ✓ Ease of use.
- ✓ Reliability and security.
- ✓ Robust devices.





Mostly Enterprise  
Worldwide  
Cost effective



Mostly Public Safety  
Mostly North America  
Secure and feature rich.



Mostly Public Safety  
Mostly Europe  
Secure and feature rich.



Mostly Enterprise  
Worldwide  
Broadband functionality

DMR is

**MOTOTRBO™**

*Professional Digital Two-Way Radio System*

Why choose  
MOTOTRBO  
?



Lower cost of  
ownership.



Large  
coverage  
area.



Easy RF  
spectrum  
licensing.

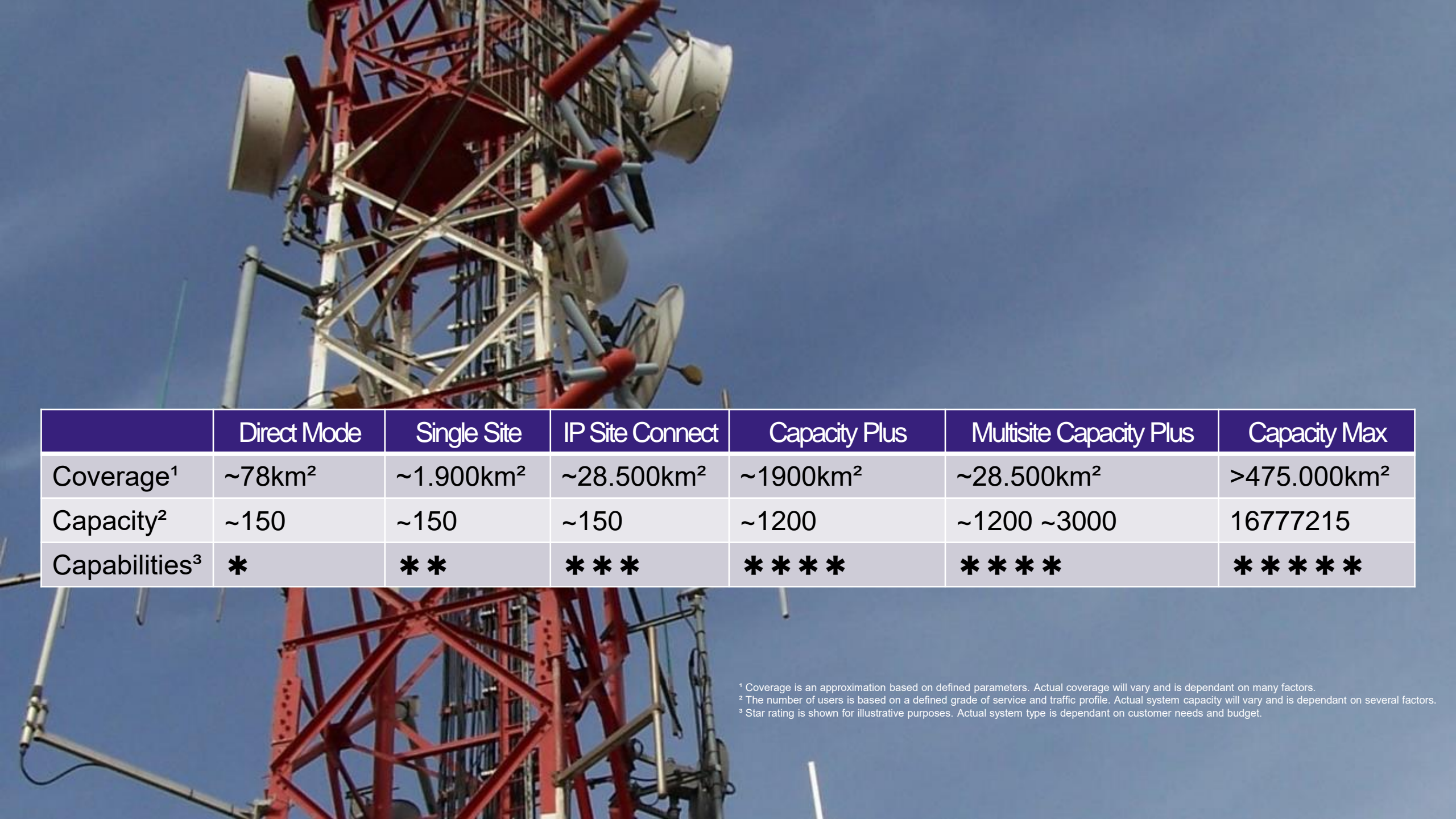


Registration	All Call	Emergency Call, Voice to Follow	802.11n Wi-Fi
Group Call	Emergency Alert	Emergency Search Tone	WPA2/WPA3 with TKIP
Private Call	Emergency Call	Extended Text Messaging	NIST CSF 1.1
Group Broadcast Call	Dispatch Call	Telemetry	Secureboot Linux
Roaming	Telephone Call	Over-the-Air Programming	Signed Firmware
Short Text Message	Packet Data	Over-the-Air Battery Management	AES-256
Queue Call	Text Message (Standard)	Enhanced Roaming	Key Randomisation
Multisite Call	Radio Check	User-Selectable Audio Profiles	TLS-PSK
RAS	Radio Stun/Revive	Voice Announcement	A-RC4 40bit
Call Alert	Radio Monitor	Text to Speech	Digital Voting
DCDM	Key-based Authentication	IMPRES Energy	Bluetooth 5.2
ERDM	Voice Interrupt	IMPRES Audio	GATT
Enhanced Channel Access	Call Pre-emption	Acoustic Feedback Suppressor	Indoor Location Tracking
Subscriber Authentication	Mass Registration	Trill Enhancement	GPS
Site and Channel Extensibility	Late Entry	Bluetooth Audio and Data	Galileo
Site Trunking	Talkgroup Affiliation	Fall Alert and Lone Worker	Beidou
Enhanced Registration	High Efficiency GPS	Data Gateway Redundancy	USBD LIP on DMR T3
Advanced Late Entry	Indoor Location Tracking	Intersystem Connectivity	MDC1200
Call Alert	Data Revert	Call Queue Priority (via SAC)	Select 5 ZVEI CCIR EEA
Critical Site Assignment	DGNA	Enhanced Channel Access	Enhanced Noise Cancellation
Site Restriction	Inband Alias	Remote Repeater Programming	SINC+ Noise Cancelling
Subscriber Access Control	Inband Location	Wireline Application Interface	Audio Recording
All Start Control Channel	Telemetry	M-Radio Control Collaboration	AGC
Repeater Redundancy	Event driven location updates.	VB-400 Integration	RX Audio Levelling
Controller Redundancy	Distance driver location updates.	Option Board	Microphone Distortion Control
Radio Management	SOLAS MED 5.20	ATEX	Intelligent Audio

Feature	How does it work?	How will it benefit you?
Fall Alert & Lone Worker.	Sends an emergency signal if the worker is motionless for a longer period or falls down.	Reduce risk due to workplace injuries. Improve employee morale and workplace safety.
Radio Management & OTAP	All radio configurations and software updates are centrally managed and pushed to the radios over the air or via Wi-Fi.	Reduce downtime due to configuration updates. Reduce maintenance costs due to technician site visits.
MIL-STD 810G; IP68 and ALT.	The radio devices have been tested to withstand harsh environments making them rugged and reliable.	Reduce maintenance costs and downtime caused by radio communications equipment failures.

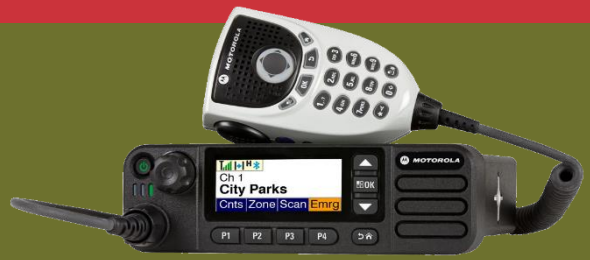
# Systems and Devices





	Direct Mode	Single Site	IP Site Connect	Capacity Plus	Multisite Capacity Plus	Capacity Max
Coverage <sup>1</sup>	~78km <sup>2</sup>	~1.900km <sup>2</sup>	~28.500km <sup>2</sup>	~1900km <sup>2</sup>	~28.500km <sup>2</sup>	>475.000km <sup>2</sup>
Capacity <sup>2</sup>	~150	~150	~150	~1200	~1200 ~3000	16777215
Capabilities <sup>3</sup>	*	**	***	****	*****	*****

<sup>1</sup> Coverage is an approximation based on defined parameters. Actual coverage will vary and is dependant on many factors.  
<sup>2</sup> The number of users is based on a defined grade of service and traffic profile. Actual system capacity will vary and is dependant on several factors.  
<sup>3</sup> Star rating is shown for illustrative purposes. Actual system type is dependant on customer needs and budget.



# Summary



