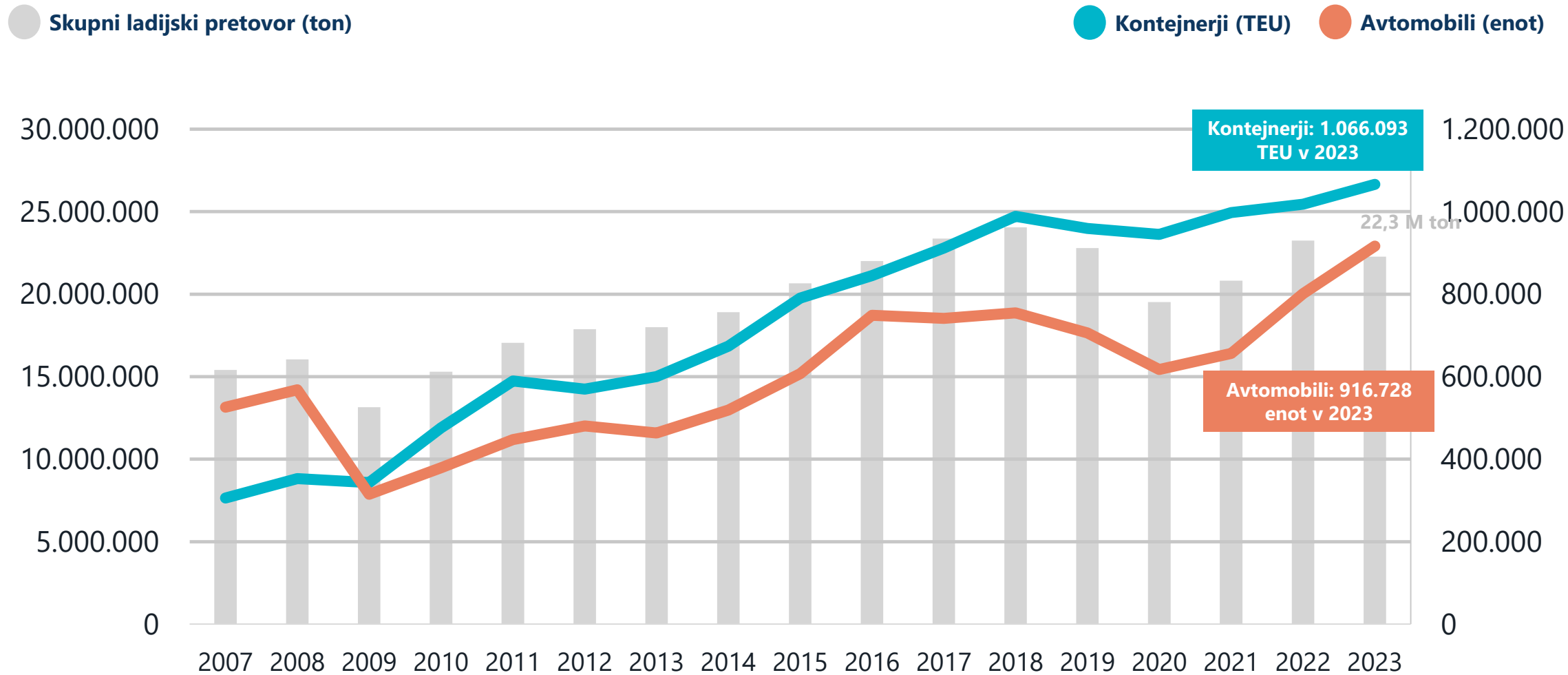




## Prometna ureditev Luke Koper d.d.

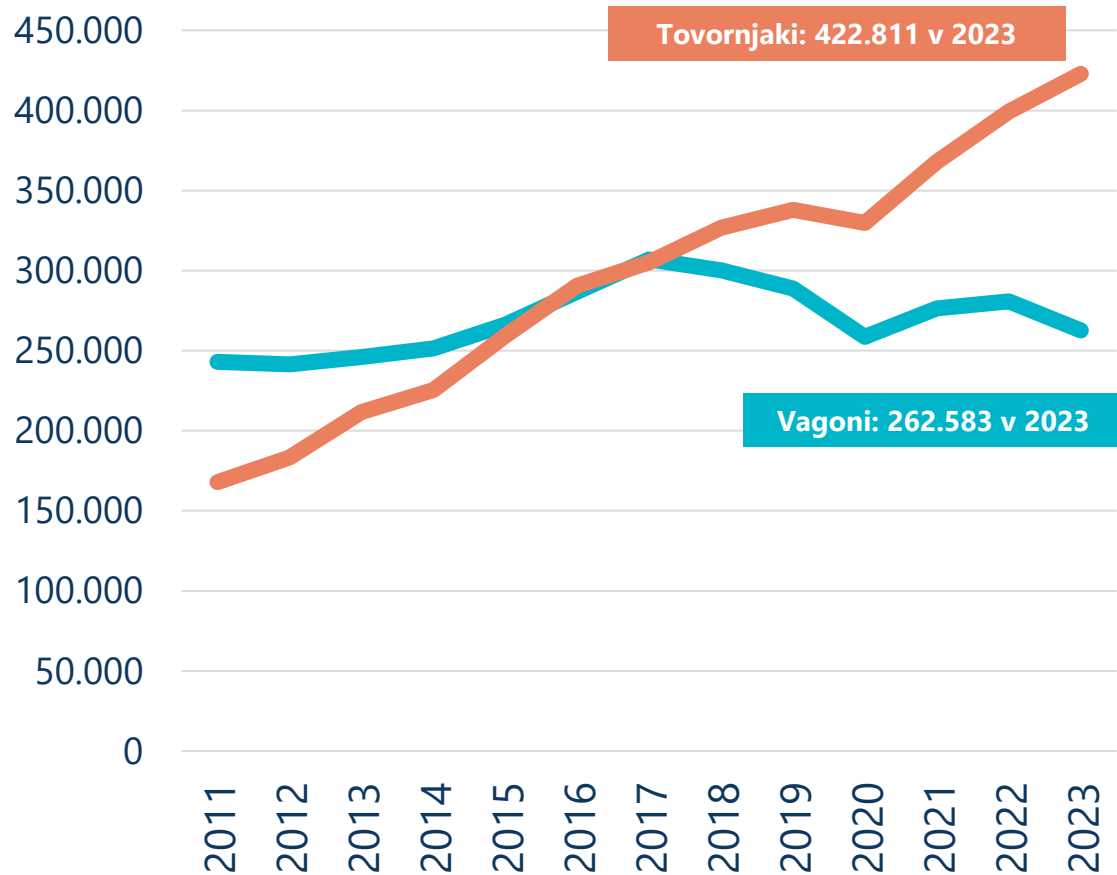


# Ladijski pretovor

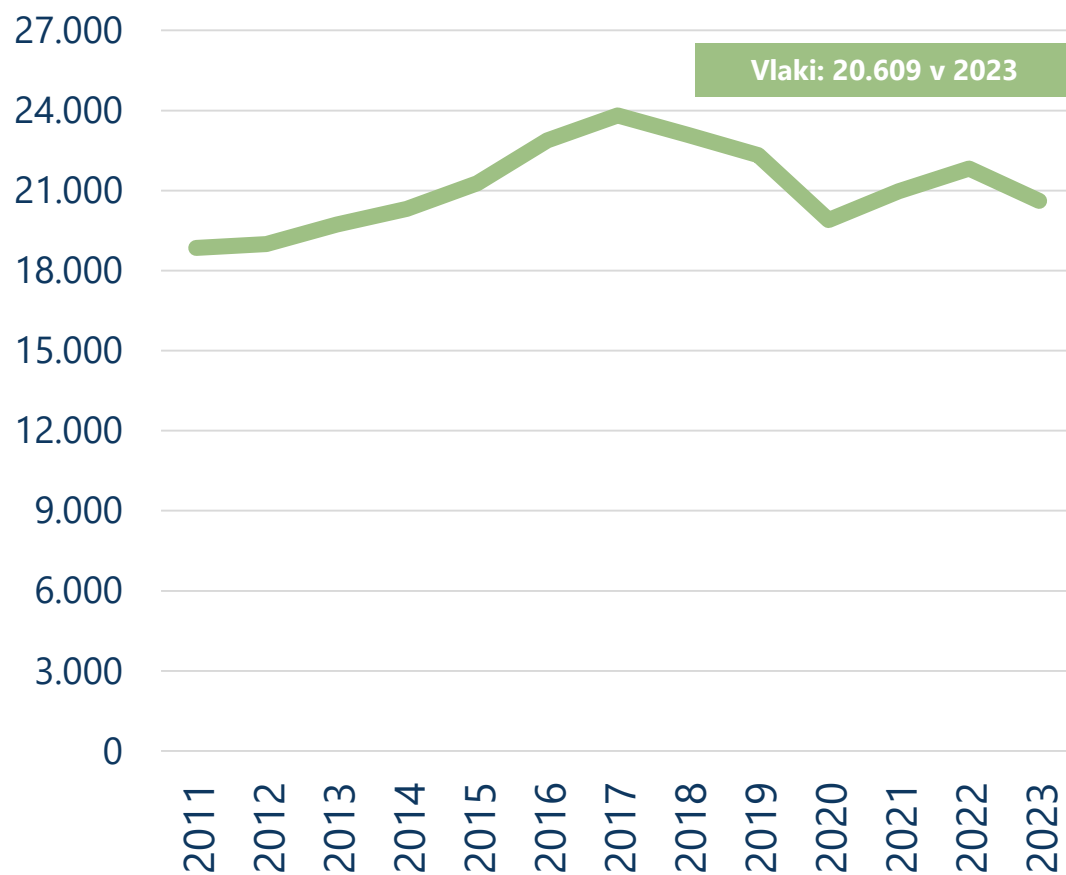


# Vlaki, vagoni, tovornjaki

## Naloženi/razloženi vagoni & št. tovornjakov

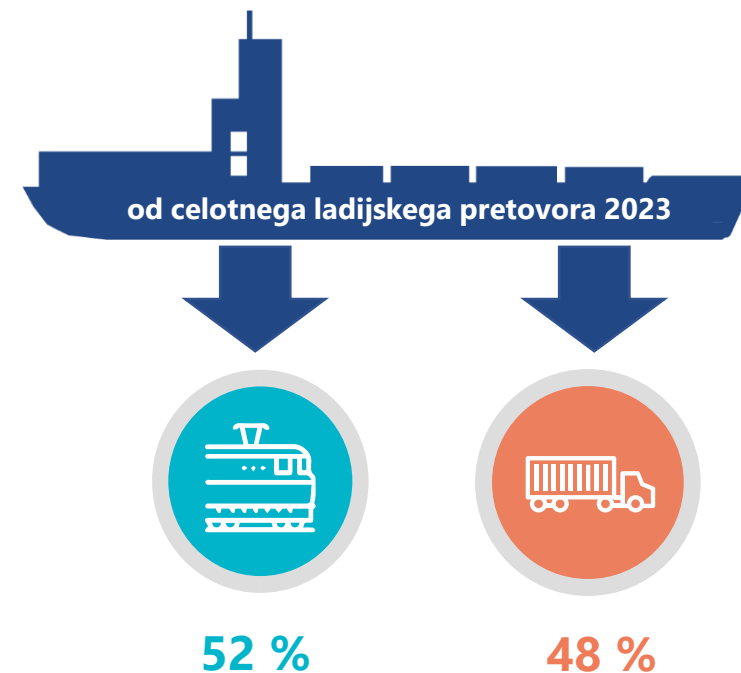
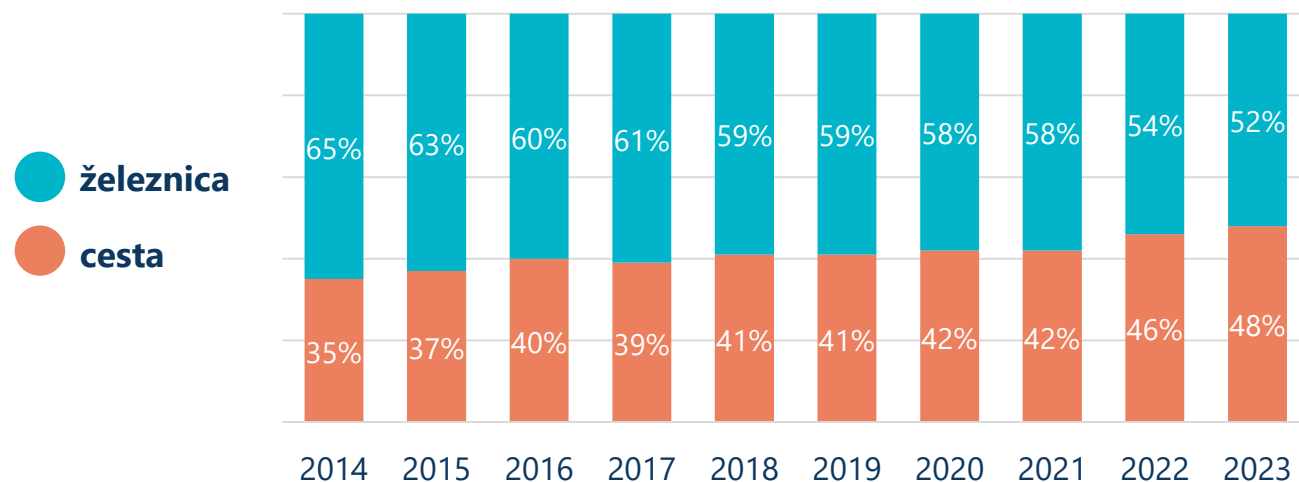


## Število vlakov

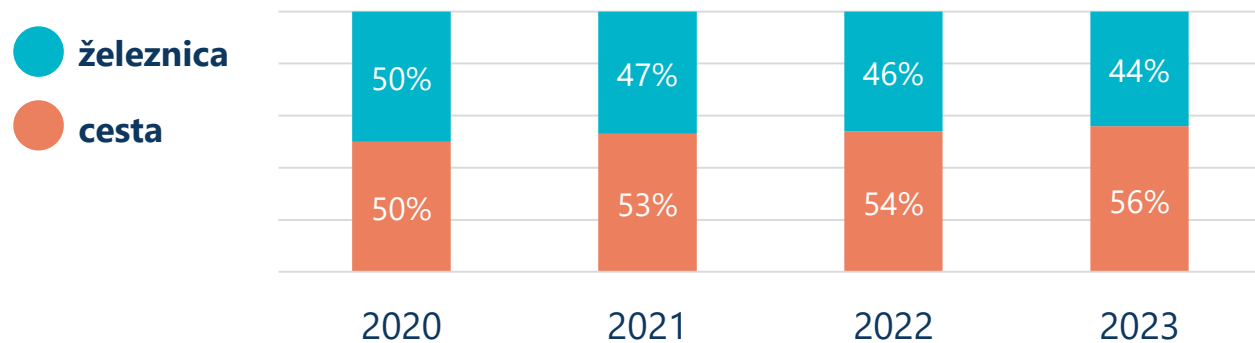


# Razmerje cesta/železnica (modal split)

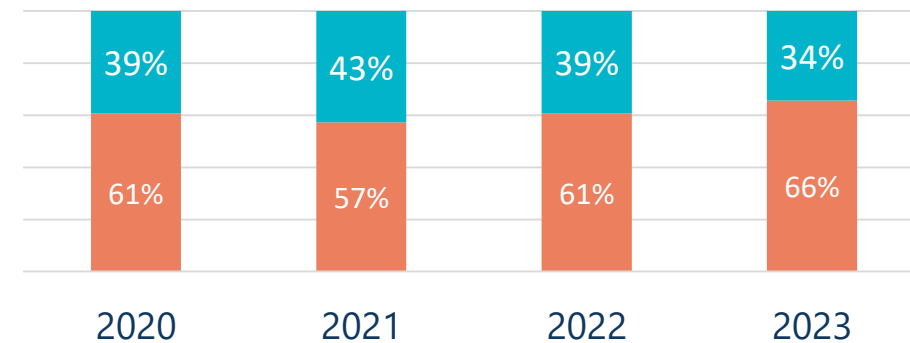
## Celotno pristanišče



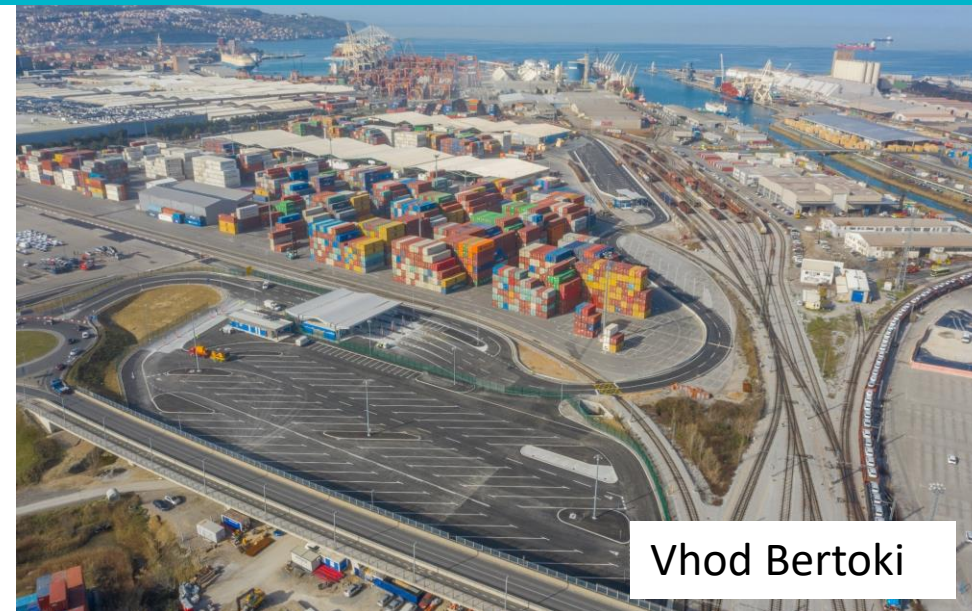
## Kontejnerski terminal



## Avtomobilski terminal



# Infrastrukturne in procesne izboljšave na kamionskem segmentu



# Bertoška in serminska vpadnica

Trenutno zaradi neurejene povezave do Serminskega in Bertoškega vhoda njunega polnega potenciala ne izkoriščamo.

## Serminska vpadnica (DARS):

Predvidena izgradnja v 2025

## Bertoška vpadnica

Naknadna razširitev vpadnice v štiripasovnico

